



B B

**PRESENTED BY:**

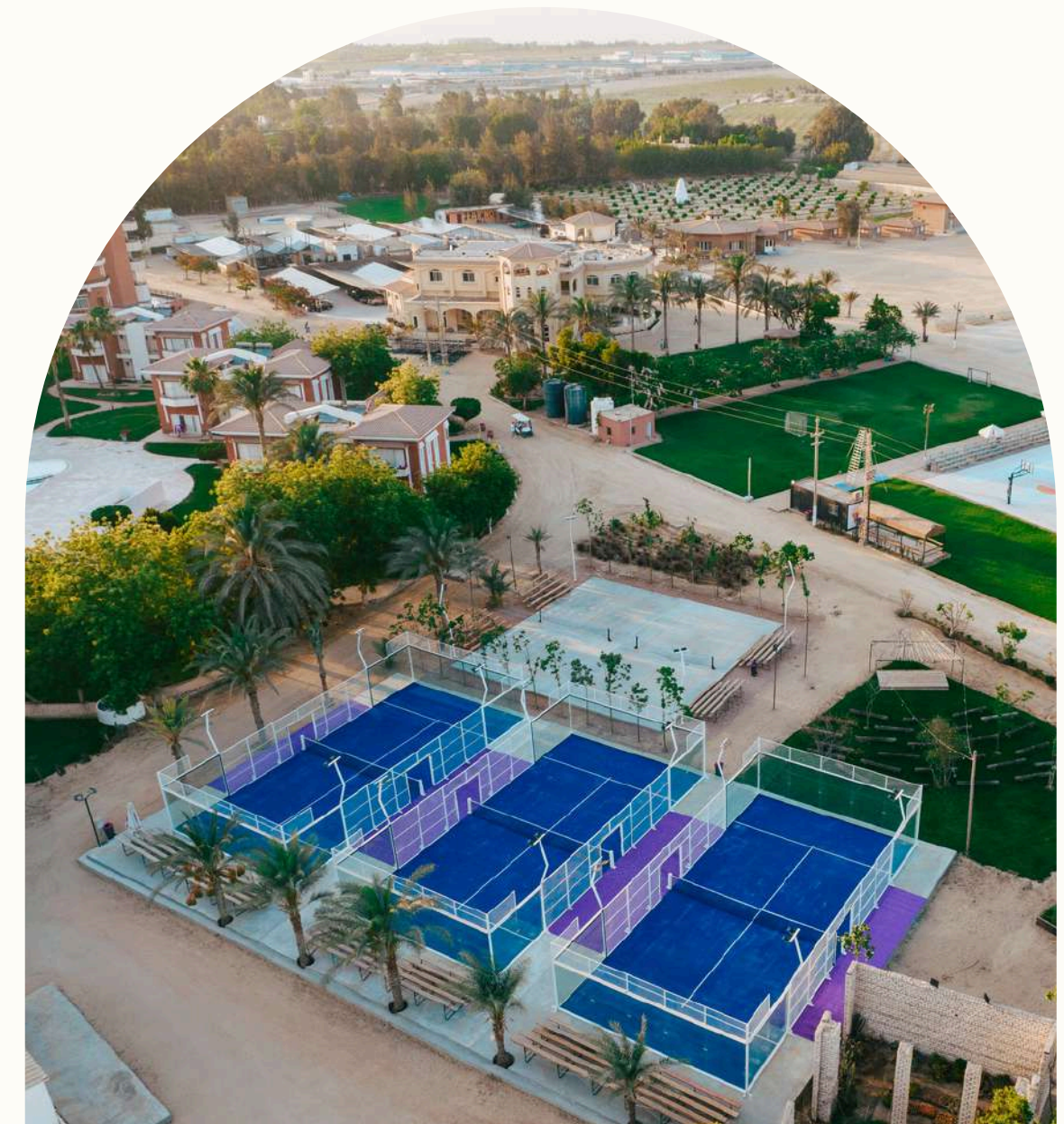
sherif Michel  
2025-2026

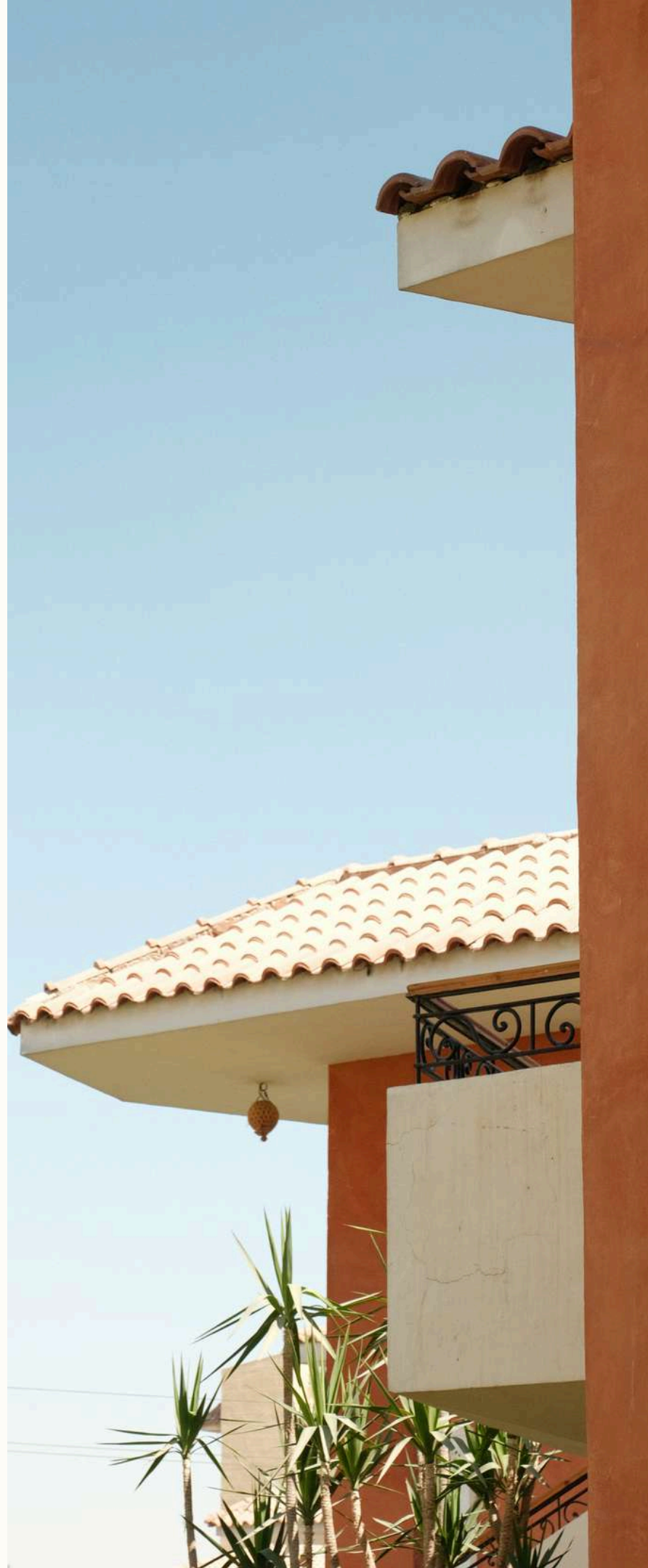
البيـ وادي  
BEIT EL WADI





Since 1999, Beit El Wadi has served as a gathering place for people across Egypt and beyond, offering a welcoming environment for church events, youth sports camps, marriage retreats, corporate conferences, and family gatherings. Situated on 150 acres in Wadi al Natrun, Beheira, just an hour from Cairo, Beit El Wadi operates under Kasr El Dobara Evangelical Church. We are proud to have hosted hundreds of thousands of guests annually and continuously invest in our facility to meet the evolving needs of our community.





# O

Our mission is to create an inclusive and welcoming environment for people of all backgrounds, offering an enriching experience and exceptional facilities for meaningful gatherings. We are dedicated to making Beit El Wadi accessible and affordable, fostering a place for connection, learning, and enjoyment. Through sustainable and efficient growth, we ensure that Beit El Wadi remains a lasting home for our community now and for generations to come.



COMMUNITY  
BUILDING



Fostering a sense of belonging and connection among diverse groups. Creating opportunities for interaction, collaboration, and shared experiences

SERVICE &  
HOSPITALITY



Providing exceptional customer service and creating a welcoming environment. Anticipating guests' needs and exceeding their expectations

ENRICHING  
EXPERIENCES



Offering engaging and meaningful activities that promote growth, learning, and enjoyment. Creating memorable experiences that leave a lasting positive impression.



# S



## Sports Camps

Students from schools, universities, and churches join us to challenge themselves and push their limits beyond their imagination. In our fun, supportive, and healthy community, campers experience growth and camaraderie, making unforgettable memories while discovering their full potential.



## Conferences

Beit El Wadi is the perfect venue for both local and international conferences, accommodating hundreds of guests with ease. Whether you're organizing church conferences, forums, or summits, we offer comprehensive packages to ensure a comfortable and productive stay for all attendees.



## Wellness Retreats

Beit El Wadi is the perfect sanctuary for wellness and relaxation retreats. Surrounded by nature and embraced by a calm ambiance, our facility offers an ideal setting for detoxing and meditation. Escape the hustle and bustle of city life and immerse yourself in tranquility, where every moment is designed to rejuvenate and restore.

# S



## Meeting Packages

We offer exceptional deals on meeting packages and day use options, tailored to fit your convenience and needs. Whether you're planning a business meeting, a team-building session, or a special event, our flexible packages ensure you have everything required for a seamless and productive experience.



## Mega Events

We take pride in hosting annual mega events with up to 15,000 attendees. Our stadium seamlessly transforms into a grand hall, offering a spacious and meticulously organized environment to accommodate large crowds. With our extensive facilities and dedicated team, we ensure every detail is managed to provide an exceptional experience.



## Corporate Events

Beit El Wadi is the ideal venue for corporate events, offering a well-equipped and focused environment for employee learning and development. We cater to lectures, experiential learning sessions, meetings, and more.

# FF

We serve thousands year-round, hosting youth camps, church gatherings, corporate events, and so much more.



Hospitality



F&B



Sports Facility



Agriculture and  
Farm Prodcution



S



## Ideal Location

Conveniently located just a short trip from Cairo. This prime location minimizes travel time and maximizes the time your group can spend enjoying our facilities and activities.

## Commitment to quality

We're dedicated to providing a truly exceptional experience. That's why we continually invest in our facilities, ensuring they are modern, well-maintained, and perfectly suited to your needs. Your comfort and satisfaction are our top priorities.

## Tailored Solutions

We understand that every group is unique. That's why we offer flexible packages and customizable experiences designed to meet the specific needs and budgets of your school or youth group.





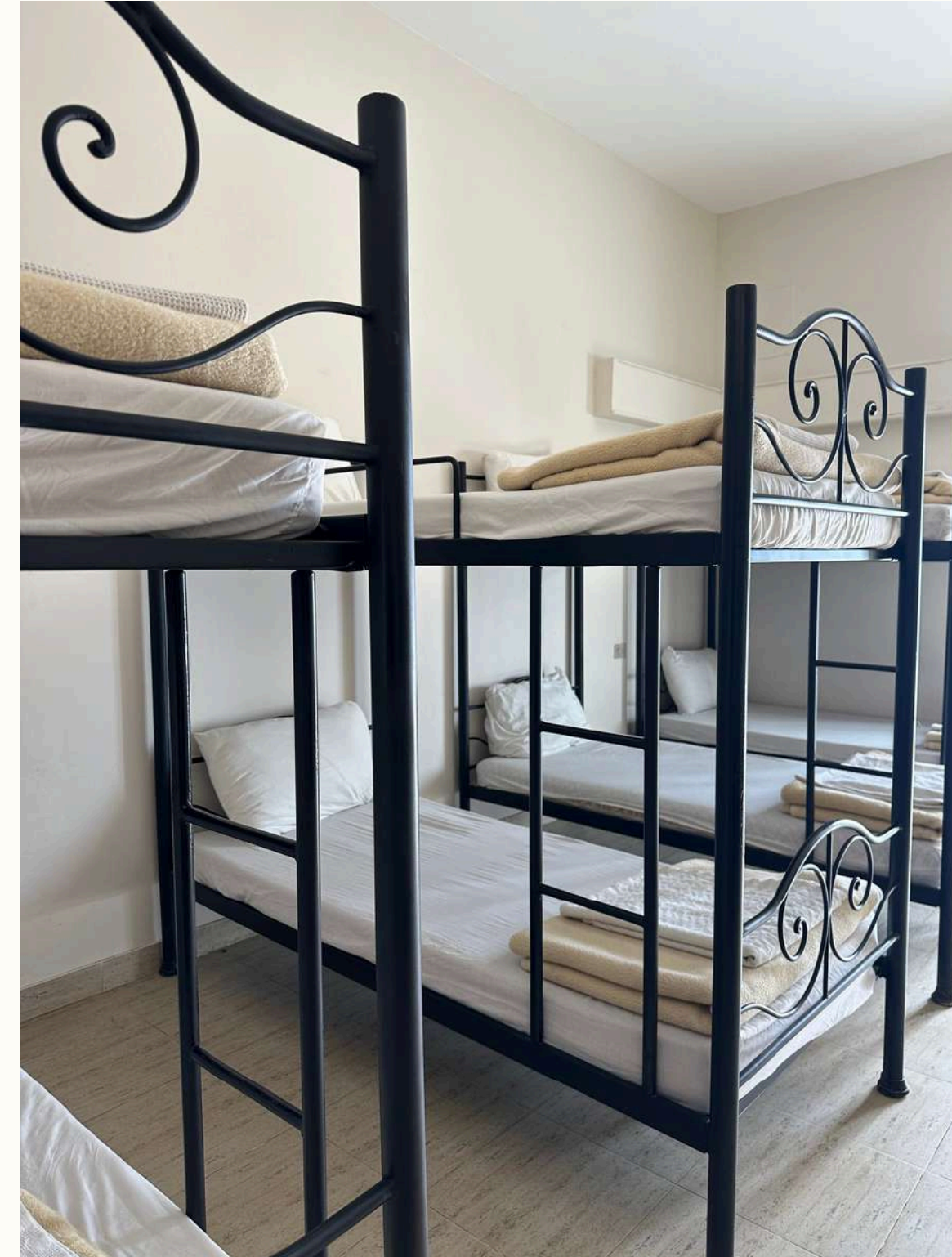
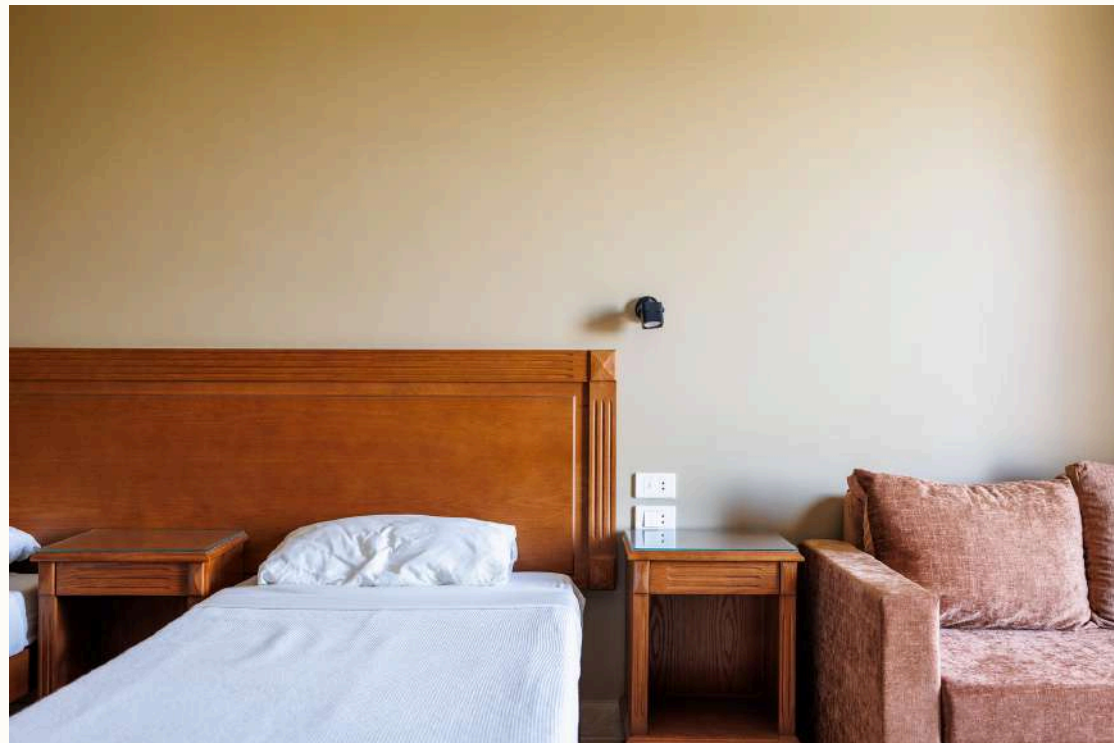
At Beit El Wadi, we believe in genuine hospitality. From the moment you step into our welcoming **hotel lobby**, you'll experience our commitment to creating a comfortable and accommodating atmosphere. With a variety of lodging options, including **145 hotel rooms**, cabins offering up to **352 beds**, and **four charming wooden chalets**, we can cater to groups of all sizes. Our versatile event spaces include a **main hall accommodating 450 guests**, a **wooden hall for 320**, **3 150-person hotel halls**, and a **theatre** with a capacity of up to **850**. For more intimate gatherings, we offer **three hotel lounges** and a dedicated **conference room** suitable for up to 25 people.







Hotel room (145 rooms)



Cabins (352 Beds)







A large, modern interior space, likely a community center or event hall, with a high ceiling. The ceiling features a grid of green acoustic panels and several linear pendant lights. The walls are covered in a perforated wood paneling. The room is furnished with several rectangular tables covered in black cloths and white chairs. Large windows on the right side provide natural light. The floor is a light-colored wood or laminate.

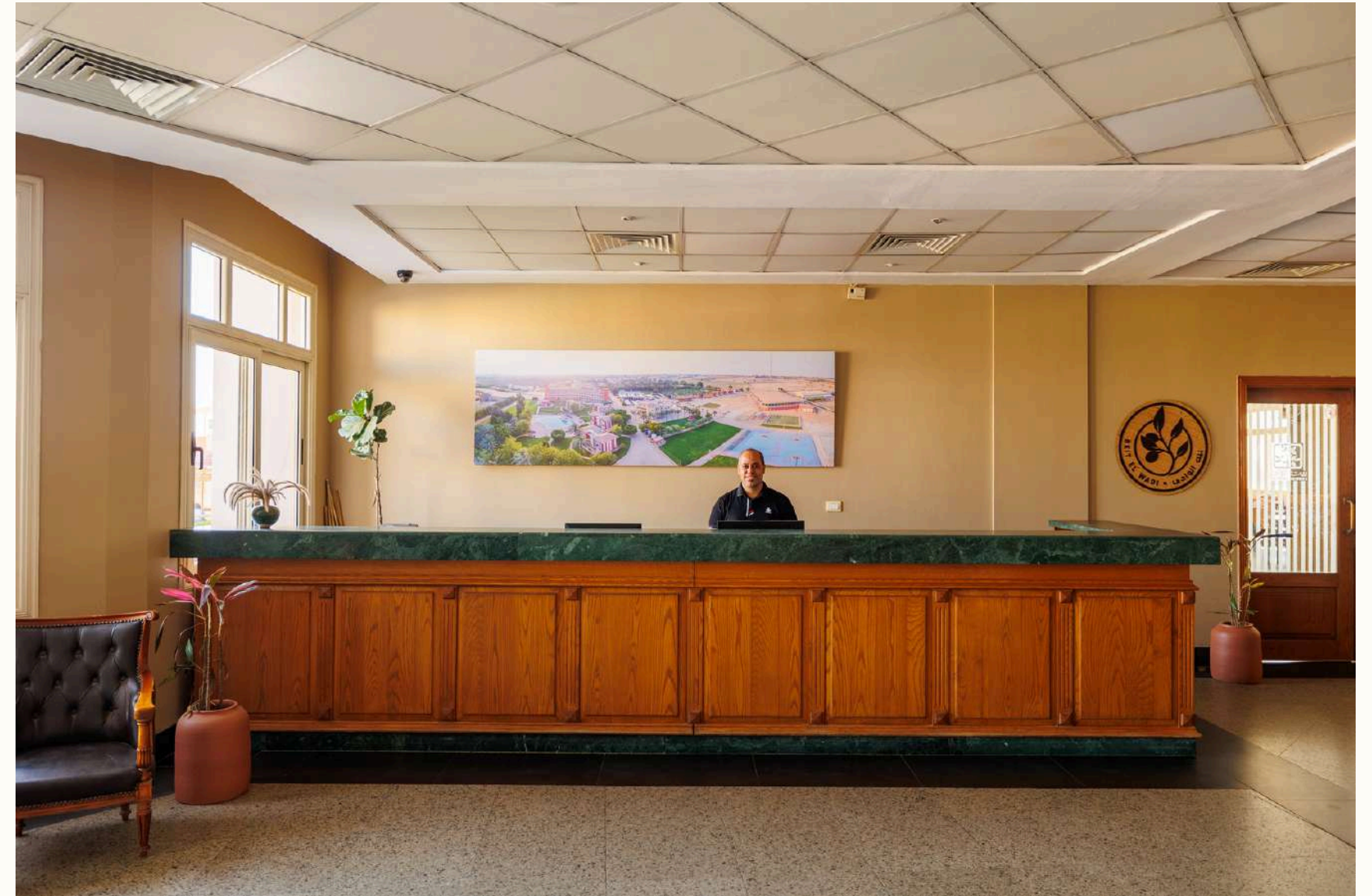




## BEIT EL WADI



Hotel lobby



Hotel Reception



## BEIT EL WADI

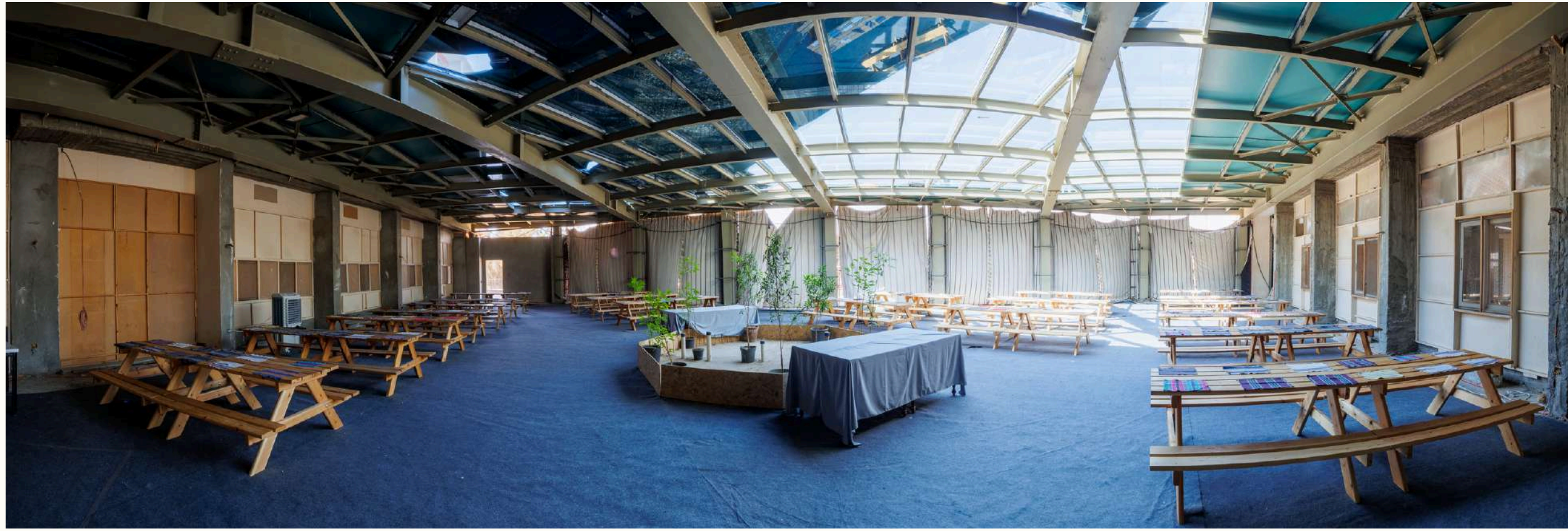


Beit El Wadi offers a diverse culinary experience to satisfy every palate. Our spacious **indoor restaurant** can accommodate up to **400 guests**, while our charming **Italian garden** provides a delightful outdoor setting complete with a **traditional pizza oven**. For poolside gatherings and barbecues, our fully equipped **pool kitchen** ensures seamless outdoor meals. We also offer a unique "**farm-to-table**" **special dinner experience**, showcasing the freshest local ingredients. In addition to these dining options, guests can enjoy refreshments and light bites at our **hotel cafeteria** or choose from **two convenient canteens** offering Coca-Cola products, fresh juices, and a variety of snacks.





## BEIT EL WADI



Indoor Restaurant (400 people)

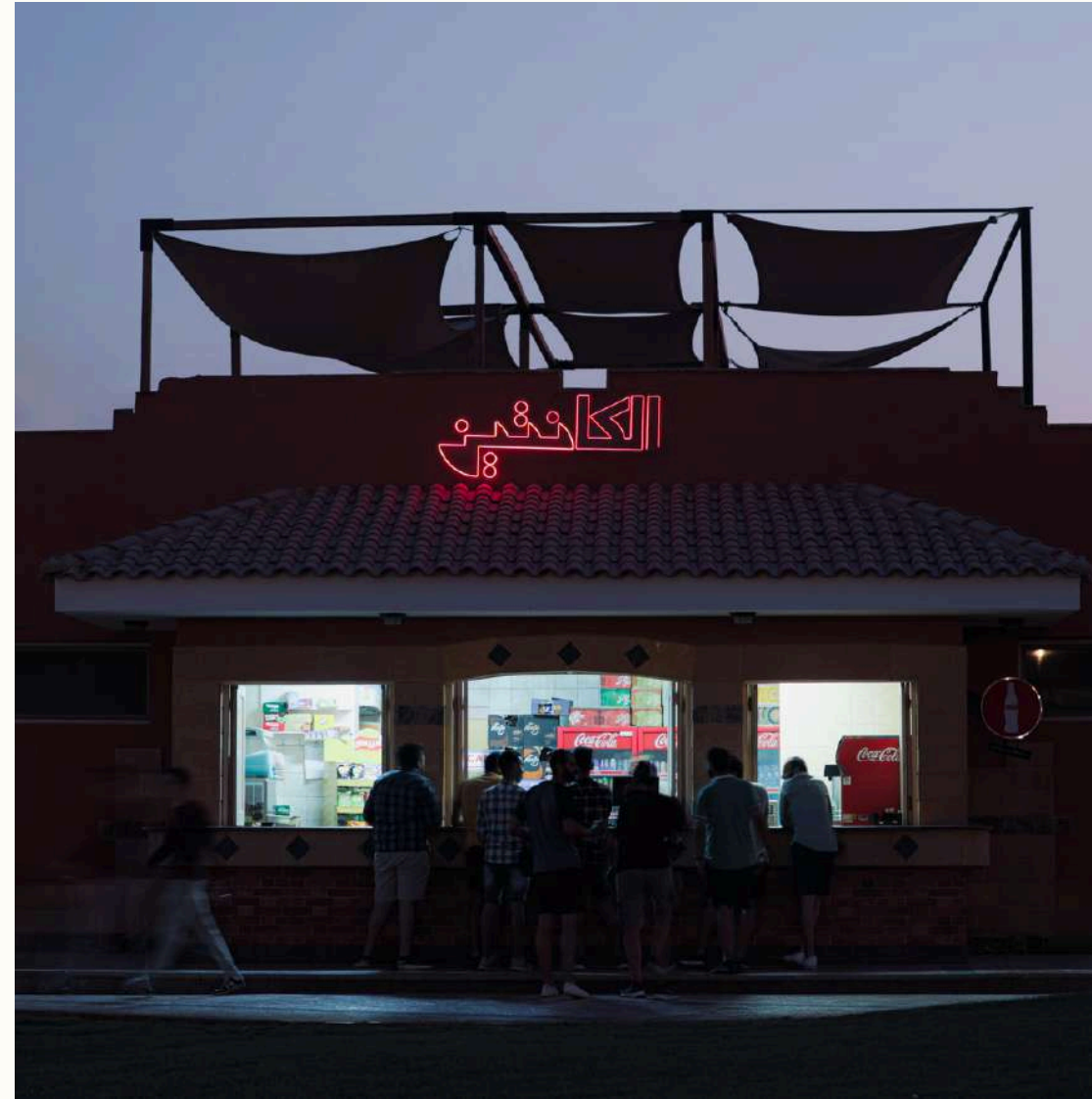


Outdoor dining area





## Canteen



## Outdoor Italian Restaurant



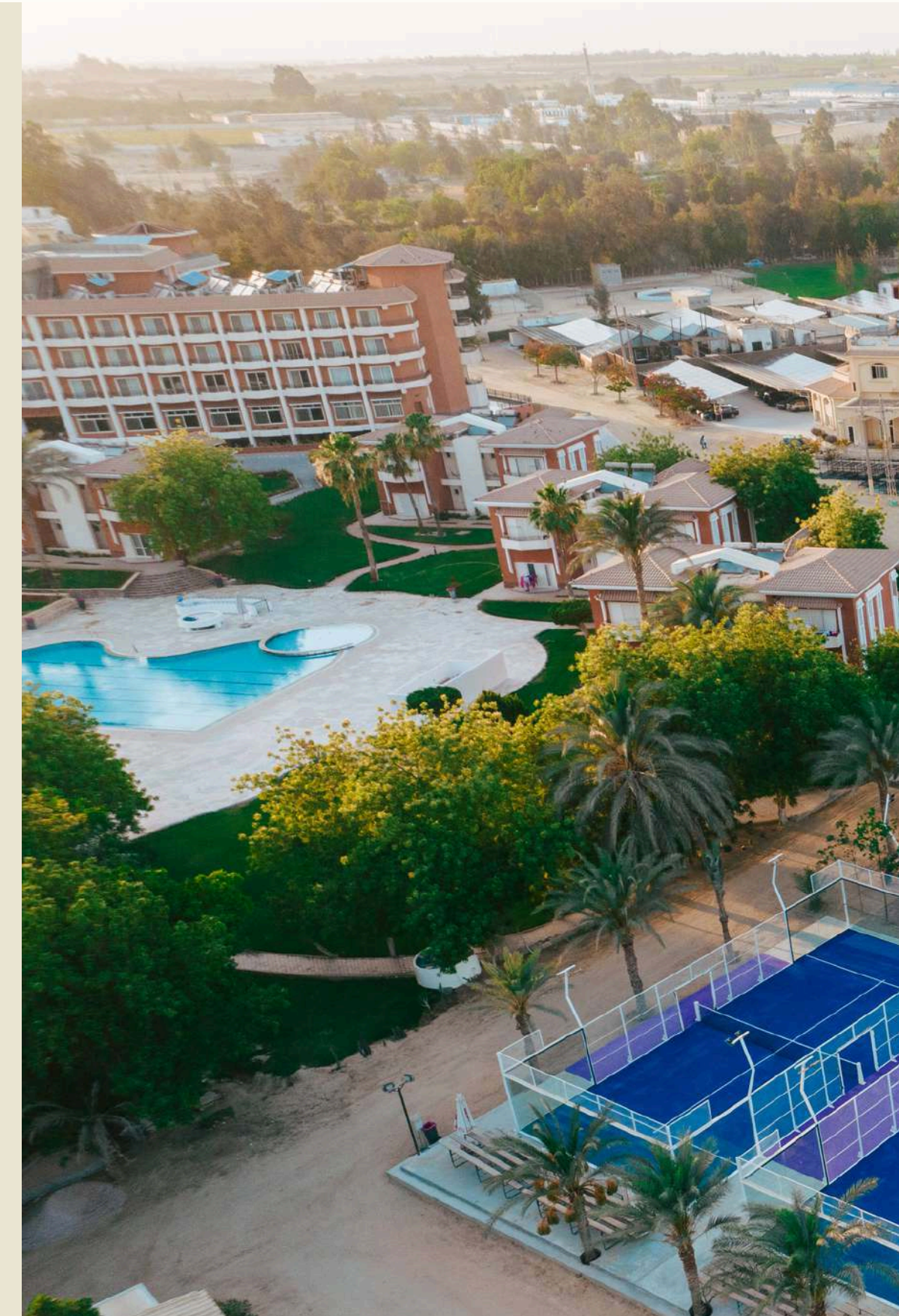


Special Dinner Farm to table experience

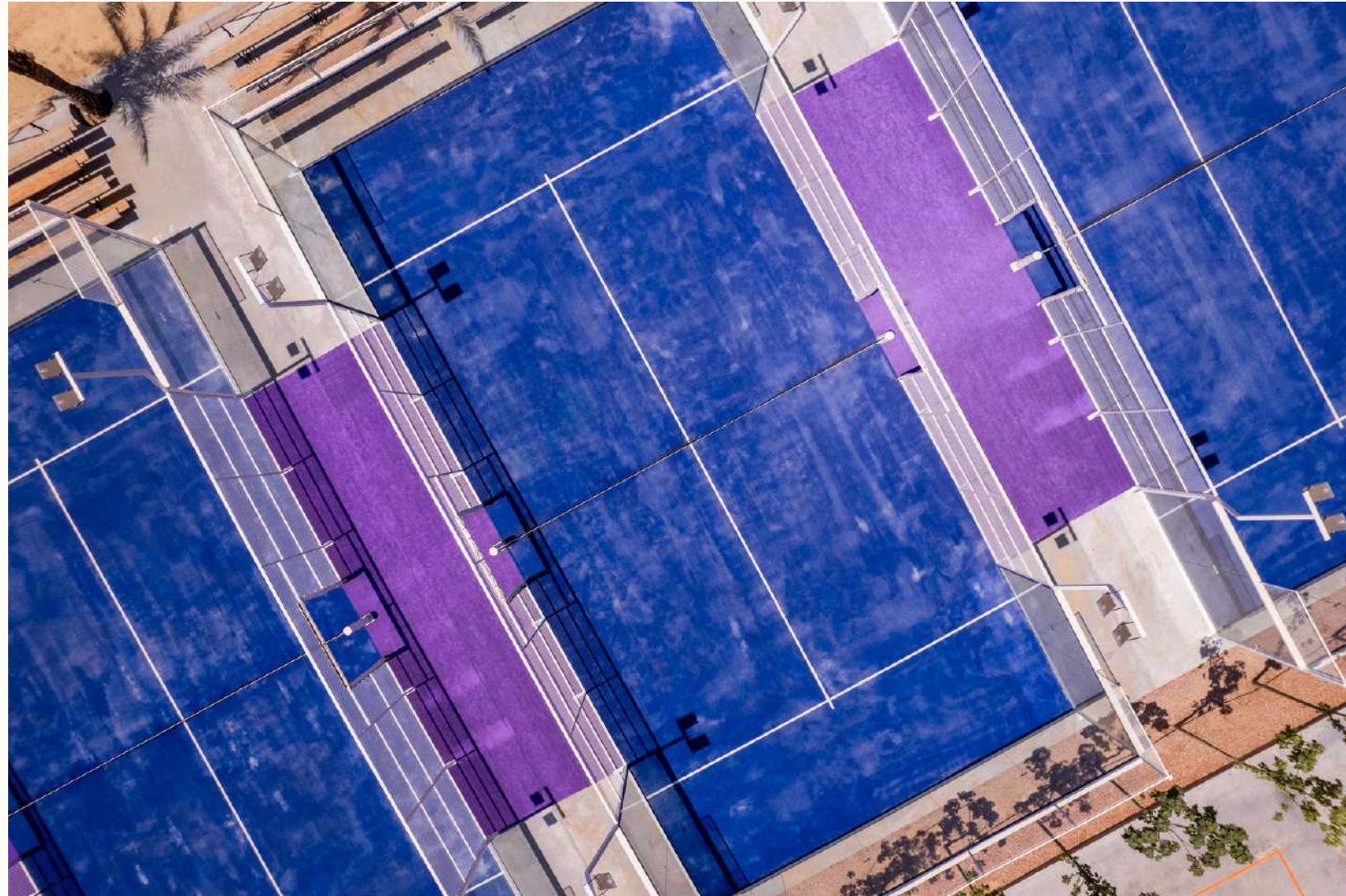




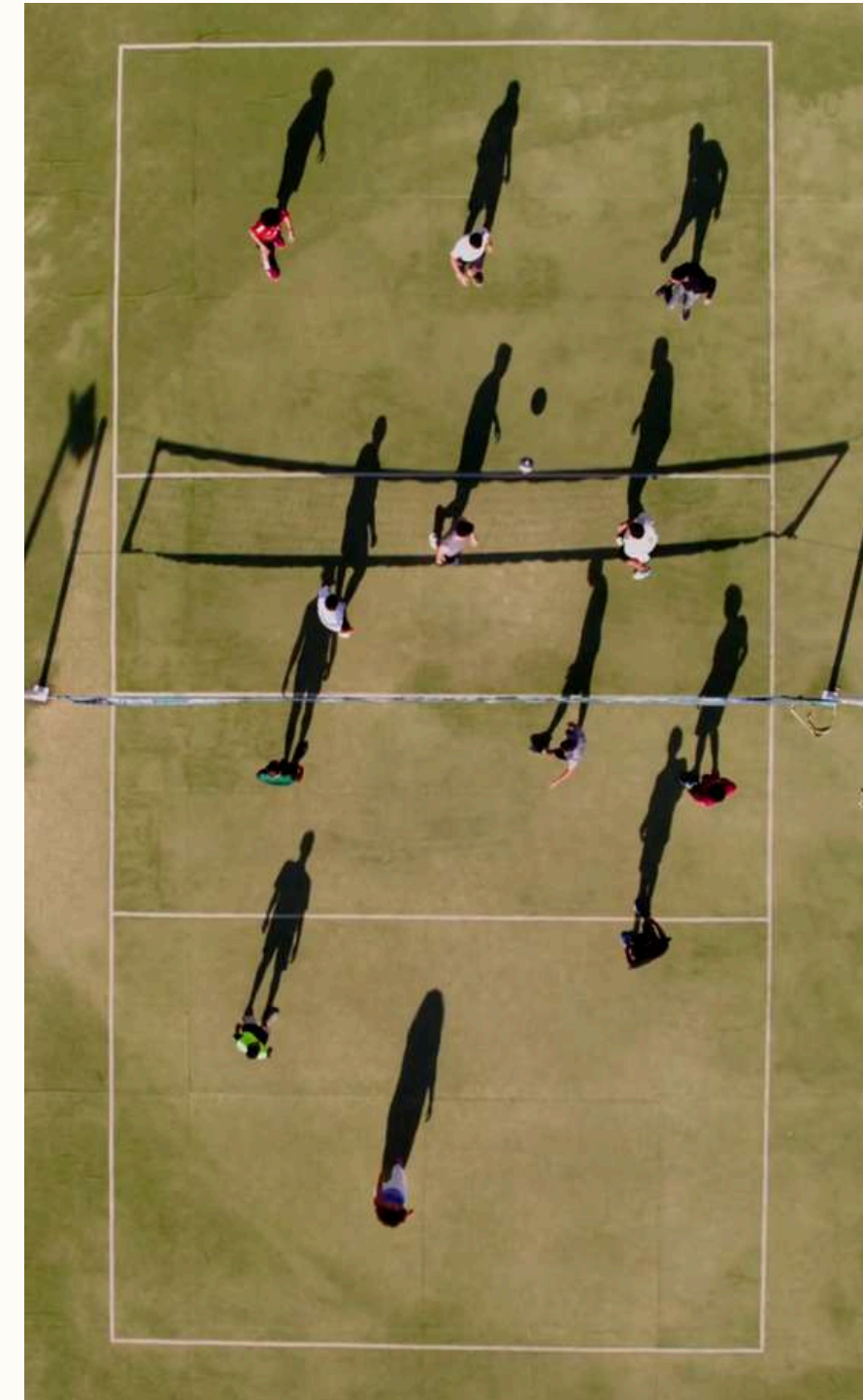
Beit El Wadi's extensive facilities offer something for everyone. Sports enthusiasts can enjoy a variety of courts, including two each for **basketball, volleyball, and dodgeball**, along with a **full-sized football stadium, squash courts, pickleball, and padel tennis**. Cool off in our refreshing **pool**, or for the adventurous, experience the thrill of our extreme sports zone, featuring a **zipline, climbing wall, high ropes course, slingshot, and slip & slide**. Stay fit at our unique **outdoor rooftop gym** with a stunning pool view. And as the day winds down, gather around our cozy **campfire circle**, a seated area perfect for sharing stories and enjoying oriental snacks under the stars.







Padel tennis courts



Volleyball court



BEIT EL WADI



## Basketball courts



## Tennis Courts



BEIT EL WADI



## Stadium



## Beach Handball





Pickleball court



Dodgeball court





Pool





---

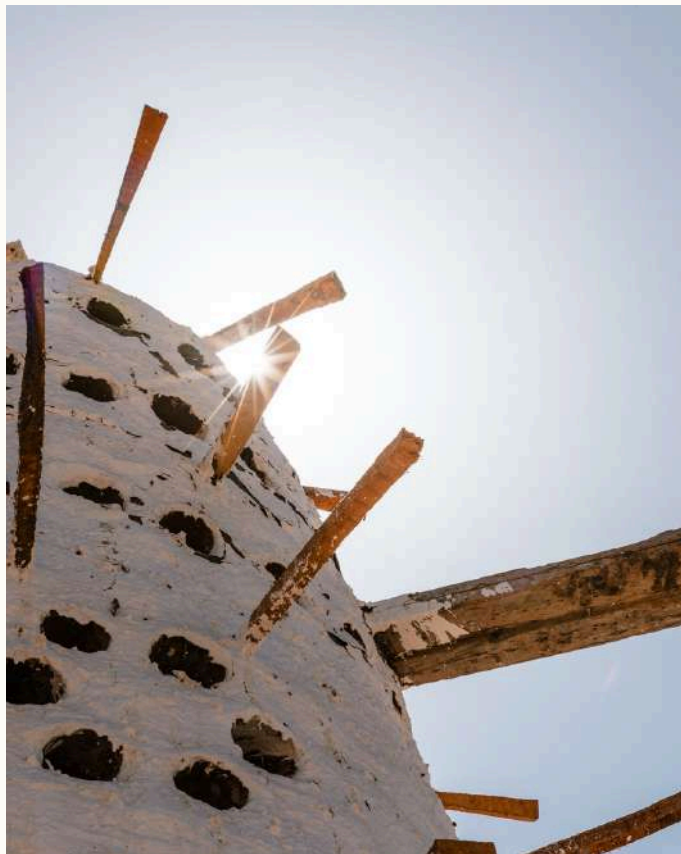


---





Our thriving **Palm Tree project**, featuring 700 trees, is projected to yield an impressive average of **250,000 kilos of Barhy dates annually by 2030**, with each tree producing between 150-400 kilos. Our state-of-the-art **greenhouses** cultivate exotic fruits like **dragon fruit and pineapples**. We also boast a diverse **mango farm** showcasing various mango types, alongside a productive farm cultivating a variety of **fruits, vegetables, and herbs like dill and cilantro**. Our animal husbandry program includes **sheep, cows, pigeons, rabbits, and a chicken project**, contributing to a rich and diverse agricultural ecosystem.





## BEIT EL WADI



## Palm trees





Pineapple Greenhouse





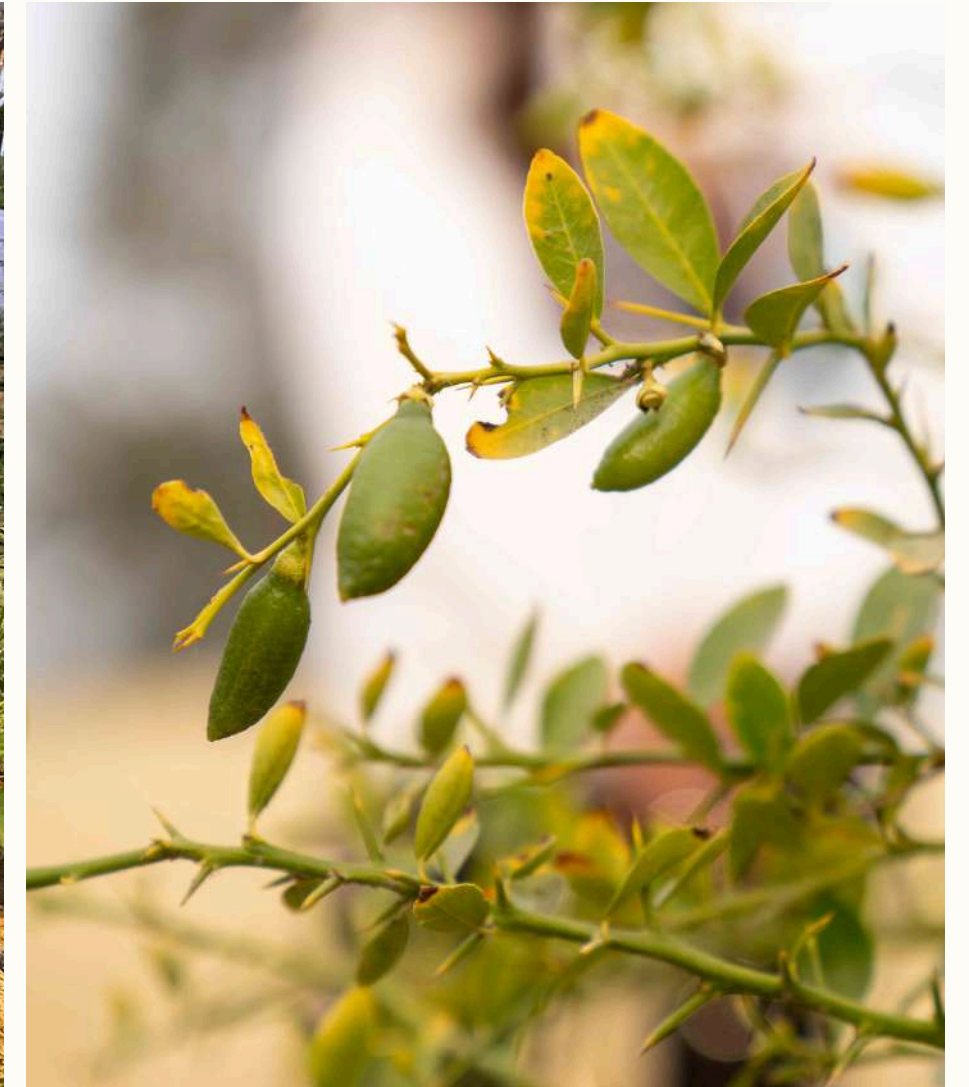
Dragonfruit Greenhouse



BEIT EL WADI



## Mango farm



## Veggies farm



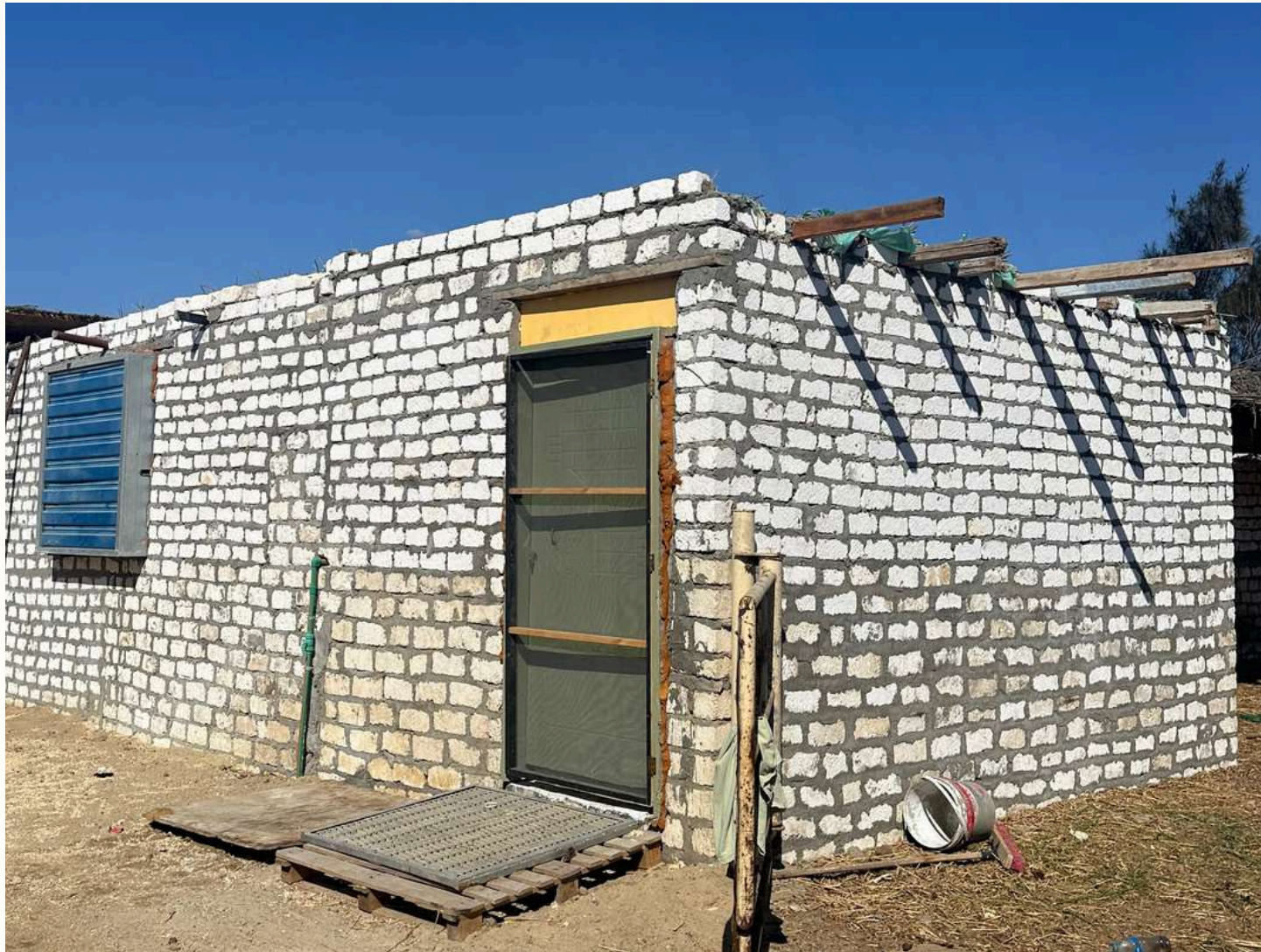


Sheep



Cows





## Chicken project



## Pigeons



BEIT EL WADI

T

CONTACT: SHERIF MICHEL

Beni Salama, Natura Valley,  
Beheira, Egypt  
[www.beitelwadi.com](http://www.beitelwadi.com)  
[sherifmichel@beitelwadi.com](mailto:sherifmichel@beitelwadi.com)  
[@beitelwadi](#)